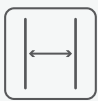


## Enhanced Grain SB

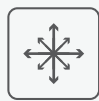
Product specification guide



Square-edge profile



Smaller width



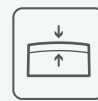
Versatile design



Hand moulded & coloured



Natural wood look



Integrated Lastane layer



'Lost-head' fixings



High slip-resistance



Recycled materials

### Enhanced Grain SB Board Details

#### Surface Composition:

Resilient Lastane® layer chemically melded to the core, with a UV stable 2K coating.



#### Core Composition:

Blend of natural minerals bonded in a polymer resin, with long fibre reinforcement.

#### Weight:

8.5kg per board

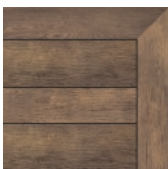
#### Coverage:

2.14 boards per m<sup>2</sup>

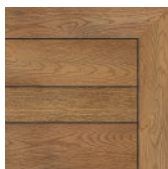
#### Dimensions:

126mm (W) x 3600mm (L) x 32mm (D)

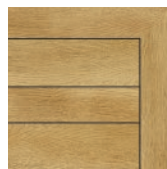
#### Available colours:



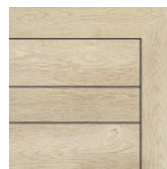
Antique Oak  
MDE126A



Coppered Oak  
MDE126C



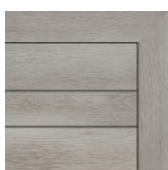
Golden Oak  
MDE126G



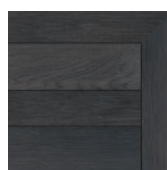
Limed Oak  
MDE126L



Brushed Basalt  
MDE126B



Smoked Oak  
MDE126D



Burnt Cedar  
MDE126R

#### Working Specification

For all applications we recommend a 4mm space between the sides of boards (or 6mm if using the DuoFix side-fixing guide) and 1mm gap at the ends on butt joints. A 10mm gap should be left between the boards and any abutting vertical surface to facilitate drainage.

The maximum unsupported overhang for the boards is 50mm and each cut board must be supported by a minimum of three joists. Where a board crosses a joist, two Durafix fixings will be needed. At the end of the boards, we'd recommend three Durafix fixings

## Residential applications

2.5kN/m<sup>2</sup> uniform distribution load

Joists must support boards at 400mm centres if boards are at 90° to joists, if boards are at 45° then joists needs to be set at 300mm centres

## Commercial applications

5kN/m<sup>2</sup> uniform distribution load

Joists must support boards at 300mm centres if boards are at 90° to joists, if boards are at 45° then joists need to be set at 240mm centres.

## Enhanced Grain SB Accessories



### Durafix fixings

Material: A2 Stainless Steel  
Size: 4.5 x 35mm  
Pack Quantity: 100  
Code: FT35P100  
Use: Fastening Fascia boards

Size: 4.5 x 45mm  
Pack Quantity: 250  
Code: FT45P250  
Use: Fastening decking onto Plas-Pro or DuoSpan

Size: 4.5 x 60mm  
Pack Quantity: 250  
Code: FT60P250  
Use: Fastening decking onto timber



### Fascia board

Width: 146mm  
Length: 3600mm  
Depth: 16mm  
Weight: 6.4kg  
Coverage: 1.85 boards per m<sup>2</sup>

Construction: Polymer resin core/  
Elastomer surface layer

Antique Oak: MFN360A  
Brushed Basalt: MFN360B  
Burnt Cedar: MFN360R  
Coppered Oak: MFN360C  
Smoked Oak: MFN360D  
Golden Oak: MFN360G  
Limed Oak: MFN360L



### Enhanced Grain decking board

Width: 176mm  
Length: 3600mm  
Depth: 32mm  
Weight: 11.8kg  
Coverage: 1.54 boards per m<sup>2</sup>

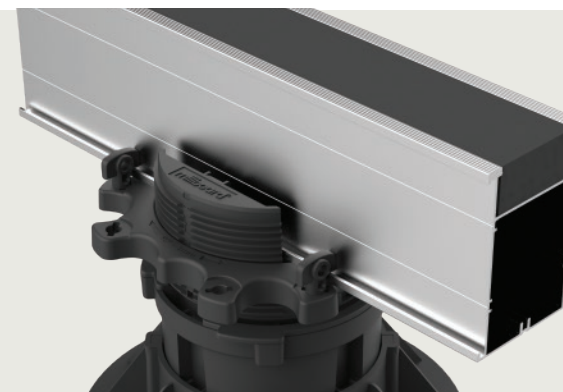
Construction: Polymer resin core/  
Elastomer surface layer

Antique Oak: MDE176A  
Brushed Basalt: MDE176B  
Burnt Cedar: MDE176R  
Coppered Oak: MDE176C  
Smoked Oak: MDE176D  
Golden Oak: MDE176G  
Limed Oak: MDE176L

## Subframes & fixings

To view the complete range of Enhanced Grain products available please visit our website:  
[millboard.co.uk/decking/enhanced-grain-sb](http://millboard.co.uk/decking/enhanced-grain-sb)

[View Accessories](#)



The information in this document was correct at the time of going to print, due to our culture of continuous improvement we reserve the right to change the information at any time without prior notice should further tests reveal different results.

The Millboard Company Ltd  
UK Head Office, Castle Court, Bodmin Road, Coventry CV2 5DB

Company registered No. 06061318 VAT No. 980 616602 Edition: 2023 v1.2

